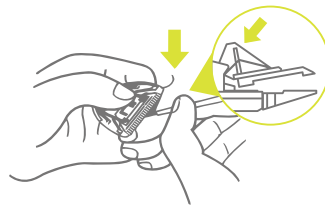
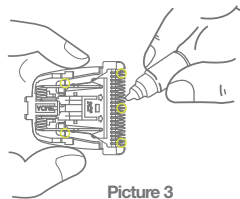


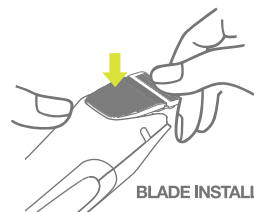
- ◆ Clean blades with small brush.
(Disassembling will cause malfunction. Do not attempt to disassemble.)



- ◆ After cleaning, apply tiny drop lubricant oil on the high light area of the blades, which shown on Picture 3
(Must hear a "click " sound and then into alignment with the slot in order to determine exactly loaded.)



Picture 3



BLADE INSTALLATION

Warranty Card

Customer contact information:

Client Name: _____ Contact Phone: _____

Address: _____

Date Purchased: _____ Exp of Warranty period: _____

Proof of purchase: Enclosed Not Enclosed (Warranty automatically voided)

(Note: Without warranty card, warranty will be subject to the time of manufactured)

Machine serial number: _____

Reason of Return: _____

5

12 MONTH LIMITED WARRANTY

JRL USA will repair or replace your unit (upon diagnosis of the defect) free of charge for 12 months from the date of purchase if the appliance has a manufacture's defect. To obtain service under the terms of the warranty, the defective unit must be returned to the JRL Service please email us info@jrlusa.com for return mailing address. Inside your package should be a copy of your sales receipt, a note which includes the defects of the unit and a check in the amount of \$15.00 to cover shipping & handling. Should there be a malfunction on the manufacture's behalf within the first 30 days of purchase, JRL will provide a call tag for the unit to be picked up free of charge. Once it is received, the replacement will be shipped. If the proof of purchase is not included with your defected item, the warranty will be voided.

ANY IMPLIED WARRANTIES, OBLIGATIONS, OR LIABILITIES, INCLUDING BUT NOT LIMITED TO THE IMPLIED WARRANTY OF MERCHANTABILITY AND FITNESS OR A PARTICULAR PURPOSE, SHALL BE LIMITED IN DURATION TO THE 12 MONTH DURATION OF THIS WRITTEN , LIMITED WARRANTY . Some states do not allow the exclusion or limitation of special, incidental, or consequential damages, so the above limitation may not apply to you.

IN NO EVENT SHALL JRL USA BE LIABLE FOR ANY SPECIAL, INCIDENTAL, OR CONSEQUENTIAL DAMAGES FRO BREACH OF THIS OR ANY OTHER WARRANTY, EXPRESSED OR IMPLIED, WHATSOEVER. Some states do not allow the exclusion or limitation of special, incidental, or consequential damages, so the above limitation may not apply to you.

This warranty gives the buyer specific legal rights. There may be other rights which vary from state to state.

Service Department

3850 S University Dr. #293152 Davie, FL 33329

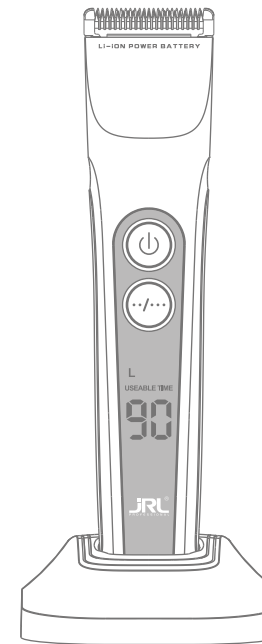
Phone: +1 954-228-6666



JRL USA,LLC.
3850 S University Dr. #293152 Davie, LF 33329
www.jrlusa.com
Instagram : @jrlusa

FreshFade
THE PROFESSIONAL HAIR TRIMMER

Model:1050



PATENTS:
201630368706.3
201520016129.1



USER'S MANUAL

Tips

1. This product is designed for professional use only. This machine is not designed to be used on synthetic hair or for any other purpose other than cutting 100% human hair.
2. The company will not take responsibility for malfunctions or damages caused by misuse.
3. The safety instructions and the operating manual are also available in PDF format from our website: www.jrl.com.


Safety precautions

Keep Away from Children:

Please store clipper away from children.

Clipper contains sharp blades and small parts that can be harmful to minors.

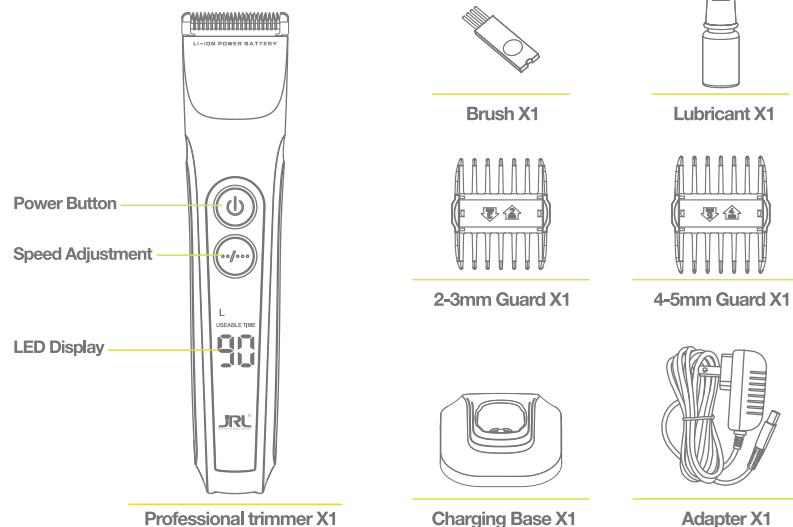
Safety Use:

1. This appliance can be used by children aged from 8 years and above and persons with reduced physical, sensory or mental capabilities or lack of experience and knowledge if they have been given supervision or instruction concerning use of the appliance in a safe way and understand the hazards involved.
2. This appliance is not intended for use by persons (including children) with reduced physical, sensory or mental capabilities, or lack of experience and knowledge, unless they have been given supervision or instruction concerning use of the appliance by a person responsible for their safety.
3. Children shall not play with the appliance.
4. Cleaning and user maintenance shall not be made by children without supervision.
5. The appliance is only to be used with the power supply unit provided with the appliance.
6. WARNING: Keep the appliance dry.
7. This appliance contains batteries that are non-replaceable.
8. Unplug the power adapter before cleaning the clipper.
9. Remove the blade first, then use cleaning brush to remove any hair buildup.
10. Keep away from water in order to avoid shock or damage to the clipper.
11. If the clipper is accidentally dropped into water or any other chemicals, discard immediately. Do not try to dry it and plug it into a power source.
12. To properly store, remove clipper from dock, unplug adapter, and thoroughly clean your unit. Do not store the clipper on the charging dock or leave it attached to the adapter.
13. If the cord on the power adapter is damaged, stop using it immediately and replace right away.
14. Do not disassemble this product on your own. Visit authorized dealers for service and repair.
15. Choose the correct voltage socket before charging (AC100-240V 50/60Hz).
16. Please do not twist, disassemble or puncture the rechargeable battery within the clipper, otherwise it may cause a short circuit or burn the machine. If the battery is not working, do not run the clipper and take it to an authorized dealer.
17. Extended use in temperatures below -10°C or above 40°C is not recommended as it may damage the battery.
18.  detachable power supply part (apply to KAI201A-0502000EU/KAI201A-0502000BS/KAI201A-0502000AU model adapter)
19. Type of battery: Lithium ion battery
20. Dispose of used batteries according to local regulations. Do not throw into household waste; use proper recycling or collection points.
21. Avoid contact with leaking material. If contact occurs, rinse with water and seek medical advice. Use gloves and dispose of safely.
22. Do not expose the appliance or battery to excessive temperatures
23. Be aware of the risk of terminals of the battery-operated appliance or battery being short-circuited by metal objects.

To Avoid Product Damage:

1. Only use original accessories.
2. Do not sharpen the blade on your own.
3. WARNING: For the purposes of recharging the battery, only use the detachable supply unit provided with this appliance.

Product Overview



Product Specifications

Model: 1050			
Item	Specifications	Item	Specifications
Charger	Input AC100V-240V 50-60Hz	Charge Type	Lithium-ion rechargeable battery
	Output DC3.5V 1000mA	Charging Time	About 90 mins
Rechargeable Battery	3.7V 800mAh	Fully Charged Operable	About 90 mins

LED Screen Display Features

RPM (Revolutions per minute)

Trimmer features RPM indicator which has settings that range between low-high. (Note- use speed button to set desired speed)

Remaining Time

Trimmer displays the time of usage left before necessary charging

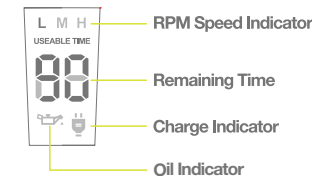
Speed	L (low)	M (Middle)	H (High)
Fully Charged Operable	90 min	80 min	70 min

Charging Tips

When the unit has about 10 min left of power, the clipper will remind you to charge by making 3 ticking sounds.

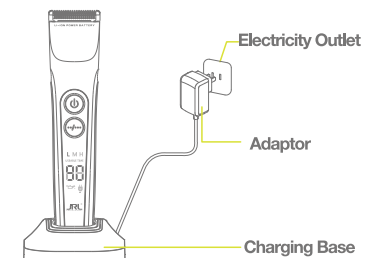
Lubing

The oil indicator will blink indicating that the unit needs to be oiled after 60 min of appearing on the screen.



Charging Functions

Trimmer features a dual charging function. While the trimmers can be charged on the charger base, it can also be charged by connecting the charging directly into the the trimmer itself.



Speed Adjustments Operations

Power Button

Tap the power switch button (shown at right) to match to turn the clipper on. Tap it again to shut off.

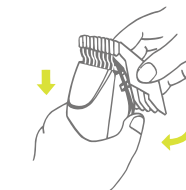
Speed Button

Tap the speed button to adjust speed from 'L' (low) to 'H' (high).

Power Button
Speed Adjustment

Function and handling methods with guard

The guards are used to determine how much of the hair will be trimmed off. The sizes included are 2mm, 3mm, 4mm, 5mm.



Guard Installation:

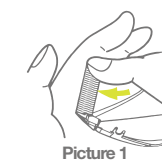
Fasten guard by sliding the guard in a downward position then forward position. When lodged, guard will not fall off during use.)

Remove guard method:

Remove the guard by pulling the guard towards your self and them in an upward position.

Cleaning and removing blade set

To remove blade set, first make sure your clipper motor is switched 'OFF', then push down with one or both thumbs (Picture 1) and slide blade off blade hinge (Picture 2).



Picture 1



Picture 2